

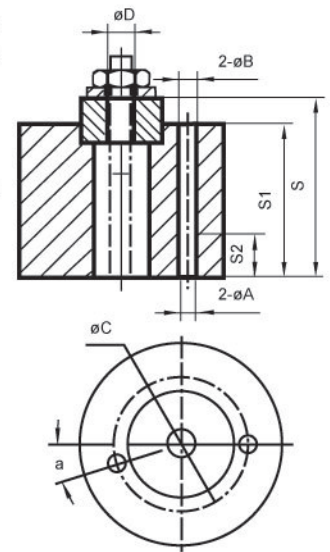
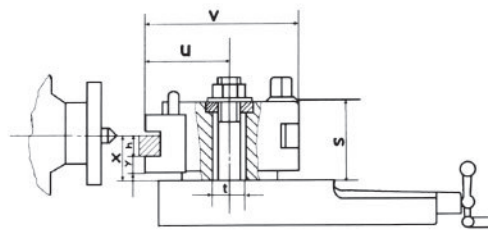
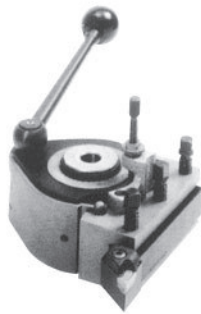
40-POSITION QUICK CHANGE TOOL POSTS (EUROPE STYLE)

CHINA



Design: Basic body and tool holder are made of high-quality steel which is hardened and ground. The tool holder is clamped against the basic body by an eccentric bolt. The system allows a repeat accuracy of 0.01 mm with 40 possible angular positions of the tool holder. This accuracy is even guaranteed after numerous tool changes. The basic sizes, type A to D suit the various ranges of lathe.

Application: Quick-change tool holders are characterized by their unlimited diversity in the use of lathe tools, drills, reamers and boring bars.

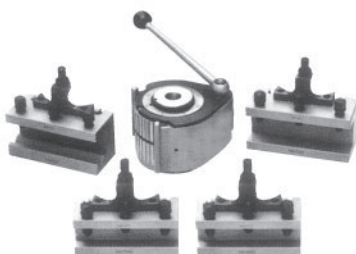


UNIT : mm

Size	540-000		540-100		540-200		540-300		540-400			540-500		
Parameter	D12	D16	D20	D20	D25	D25	D32	D32	D40	D45	D40	D50	D63	
Driving Power (kw)	1.2	2		4.5		7		13			19			
Lathe Swing (mm)	120-220		150-300		200-400		300-500		400-700			600-1000		
Xmin (mm)	18.5	25.5	29.5	32	37	38	46	47.5	55.5	61	60	72	85	
Xmax (mm)	26.5	36.5	40.5	49	52	58	57	87.5	91.5	91	96	102	105	
y (mm)	6.5	9.5		12		13	14	15.5	15.5	16	20	22	22	
h (mm)	12	16	20	20	25	25	32	32	40	45	40	50	63	
v (mm)	68	104		132		150		192	201	202	230	233	241	
s (mm)	37	55		68		76		107			124			
u (mm)	34	52		66		73		93	102	103	112	114	122	
t (mm)	13	20		20		32		40			40			

UNIT : mm

Model No.	Ø D	S2	S1	S	Ø A	Ø B	Ø C	a
A0	540-000	6	-	30	37	-	-	-
A1	540-100	10	12	45	55.3	5.6	6.8	42
E5	540-200	10	14	57	67.3	5.6	6.8	49
B2	540-300	14	20	65	75	6.9	9	64
C3	540-400	24.5	10	95	107	9.5	11	88
D1	540-500	14	26	110	125	11	14	103



5-PIECE SETS

UNIT : mm

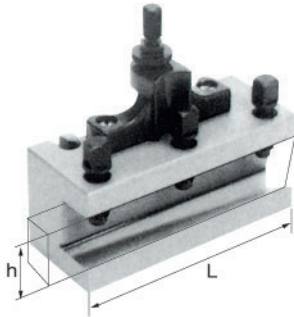
Model No.	Each Set Includes (5 Pcs / Set)	N.W/kg
TOOA0	1 pcs tool post 540-000 (A0), 3 pcs 540-010 (A0D12 x 50) and 1 pcs 540-020 (A0B12 x 50)	1.13
TOOA1	1 pcs tool post 540-100 (A1), 3 pcs 540-115 (A1D20 x 90) and 1 pcs 540-122 (A1B20 x 90)	3.60
TOOE5	1 pcs tool post 540-200 (B5), 3 pcs 540-211 (E5D20 x 100) and 1 pcs 540-220 (E5B30 x 100)	7.50
TOOB2	1 pcs tool post 540-300 (B2), 3 pcs 540-311 (B2D25 x 120) and 1 pcs 540-320 (B2B32 x 130)	11.80
TOOC3	1 pcs tool post 540-400 (C3), 3 pcs 540-411 (C3D32 x 150) and 1 pcs 540-422 (C3B40 x 160)	23.70
TOOD1	1 pcs tool post 540-500 (D1), 3 pcs 540-511 (D1D40 x 180) and 1 pcs 540-520 (D1B50 x 180)	50.00



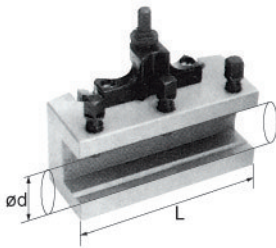
40 POSITION TOOL POST-BODY

UNIT : mm

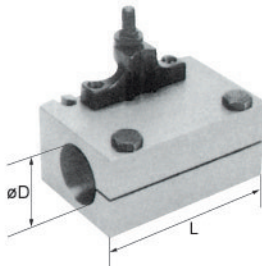
Model No.	Series No.	Lathe Swing (mm)	Height Of Cutting Edge Range (mm)
540-000	A0	120-220	D12 / 18.5~26.5
540-100	A1	150-300	D16 / 25.5~36.5 or D20 / 29.5~40.5
540-200	E5	200-400	D20 / 32~49 or D25 / 37~52
540-300	B2	300-500	D25 / 38~58 or D32 / 46~57
540-400	C3	400-700	D32 / 47.5~87.5 or D40 / 55.5~91.5 or D45 / 61~91
540-500	D1	600-1000	D40 / 60~96 or D50 / 72~102 or D63 / 85~105


TURNING & FACING HOLDER "D"

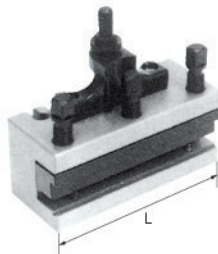
Model No.	Series No.	h (mm)	L (mm)	Model No.	Series No.	h (mm)	L (mm)
540-010	A0D	12	50	540-311	B2D	25	120
540-111	A1D	16	75	540-312	B2D	25	140
540-112	A1D	16	80	540-313	B2D	32	120
540-113	A1D	16	90	540-314	B2D	32	140
540-114	A1D	20	75	540-411	C3D	32	150
540-110	A1D	20	80	540-412	C3D	32	170
540-115	A1D	20	90	540-413	C3D	40	150
540-211	E5D	20	100	540-414	C3D	40	170
540-212	E5D	25	100	540-415	C3D	45	170
540-213	E5D	12	100	540-511	D1D	40	180
540-214	E5D	16	100	540-512	D1D	50	180
				540-513	D1D	63	180


BORING BAR HOLDER "B"

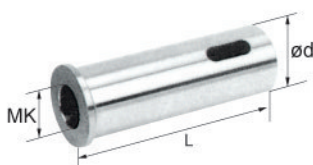
Model No.	Series No.	∅ D max (mm)	L (mm)	Model No.	Series No.	∅ D max (mm)	L (mm)
540-020	A0B	12	50	540-320	B2B	32	130
540-121	A1B	16	80	540-421	C3B	32	160
540-120	A1B	18	80	540-422	C3B	40	160
540-122	A1B	20	90	540-520	D1B	50	180
540-220	E5B	30	100	540-521	D1B	63	180


DRILLING & BORING BAR HOLDER "S"

Model No.	Series No.	∅ D max (mm)	L (mm)	Model No.	Series No.	∅ D max (mm)	L (mm)
540-030	A0S	15	50	540-330	B2S	40	120
540-130	A1S	30	80	540-431	C3S	40	150
540-131	A1S	20	90	540-432	C3S	50	150
540-231	E5S	30	100	540-530	D1S	63	180
540-232	E5S	40	100				


CUT-OFF TOOL HOLDER "A"

Model No.	Series No.	Blade (mm)	L (mm)	Model No.	Series No.	∅ D max (mm)	L (mm)
540-040	A0A	2.7 x 10	50	540-340	B2A	4 x 16	120
540-140	A1A	2.7 x 10	75	540-440	C3A	5 x 18.5	150
540-240	E5A	2.7 x 10	100				


M.T. BUSHING "L"

Model No.	Series No.	∅ D max (mm)	L (mm)	MK	Model No.	Series No.	∅ D max (mm)	L (mm)	MK
540-151	A1L	30	80	1	540-451	C3L	40	140	3
540-152	A1L	30	90	2	540-452	C3L	40	150	4
540-251	E5L	30	96	2	540-453	C3L	50	150	4
540-252	E5L	40	114	3	540-454	D1L	50	150	3
540-350	B2L	40	120	2	540-455	D1L	50	150	5
540-351	B2L	40	120	3	540-550	D1L	63	185	5
540-352	B2L	40	140	4					