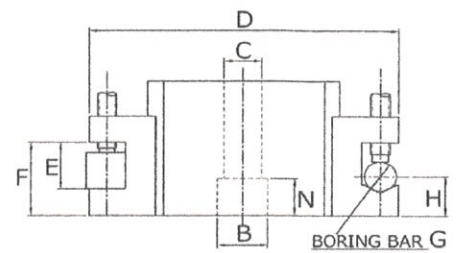
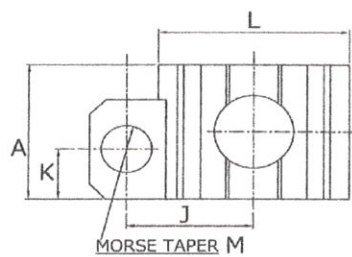


- Easily fitted
- Substantial reduction in setting time-on packing or shimming is necessary
- Gives precise repeatability



MODEL	LATHE CAPACITY	A	B	C	D	E	F	G	H	J	K	L	M	N
Qct-30	4 ¹ / ₂ "~5" Centers	66	24	17	118	20	32	13	21	52	22	76	2	24
Qct-50	5"~8" Centers	68	24	17	130	22	34	15	22	62	22	85	2	24
Qct-55	8"~11 ¹ / ₂ " Centers	81	32	21	152	27	42	17	26	65	30	100	3	25
Qct-66	11 ¹ / ₂ "~15" Centers	93	32	24	194	32	50	19	29	80	34	120	3	25
Qct-140	20"~30" Centers	108	40	27	218	38	60	25	32	98	38	140	4	32
Qct-160	25"~40" Centers	130	40	27	260	46	68	32	41	X	X	160	X	32
Qct-180	35"~45" Centers	148	40	30	295	51	77	35	46	X	X	180	X	37
Qct-200	35"~50" Centers	158	50	32	332	55	87	40	52	X	X	200	X	37

FMCO quick change toolposts is entirely made of carburized and hardened steel. The mating faces of holders and main block. The bearing face and the dowe pin of the main block as well as the swats for the tools are all high precision ground. The holders from with the main block a rigid vibrationless unit. They are clamped by an eccentric bole through a brow-in block.

福茂刀架全部由鋼材並經硬化處理製成。車刀架與主體結合面、承軸面、主體定位孔均經高精密度研磨，所以車刀架與主體堅固結成一體，絕無震動，車刀架與主體經由導引塊用偏心軸栓固定。

FMCO quick change toolposts is an indispen-sable accessory for lathes used for series production, in the toolroom or in the toolholders help cutting the set-up time by 90% NO shims are required for adjustment of precision fit of the toolholder to the main block is assured.

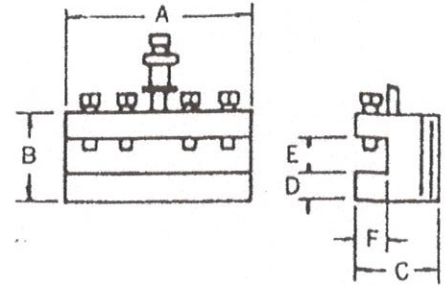
We made and export the fallowing unique accessories in definite specification for machine tools.

福茂刀架為工具室或修配廠進行車床作業生產之必備附件。

此刀架將減少切銷工具換裝時間 90%。車刀高度調整不需要墊片。使用莫式斜度車刀鑽孔時，其動力可由鞍座來傳動。保證車刀架與主體(main block)精密度配合。

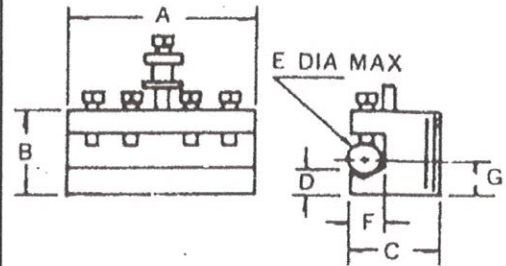
Standard toolholders

Used on	Model	A	B	C	D	E	F
Qct-30	FM301	75	44	31	12	20	15
Qct-50	FM501	85	46	34	13	22	16
Qct-55	FM551	100	60	40	16	28	18
Qct-66	FM661	120	68	49	18	32	23
Qct-140	FM1401	140	80	55	21	40	25
Qct-160	FM1601	160	90	64	23	46	32
Qct-180	FM1801	180	105	74	27	51	37
Qct-200	FM2001	200	113	85	32	55	41



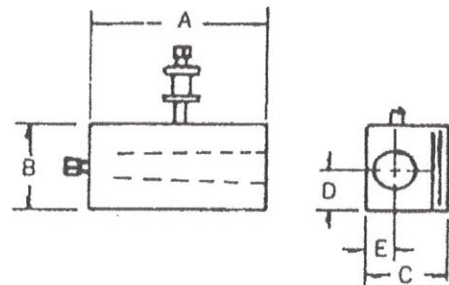
Vee toolholders

Used on	Model	A	B	C	D	E	F	G
Qct-30	FM302	75	44	31	14	13	15	21
Qct-50	FM502	85	46	34	15	15	16	22
Qct-55	FM552	100	60	40	19	18	18	26
Qct-66	FM662	120	68	49	23	23	23	29
Qct-140	FM1402	140	80	55	25	25	25	32
Qct-160	FM1602	160	90	64	32	32	31	41
Qct-180	FM1802	180	105	74	34	38	38	46
Qct-200	FM2002	200	113	85	36	40	41	52



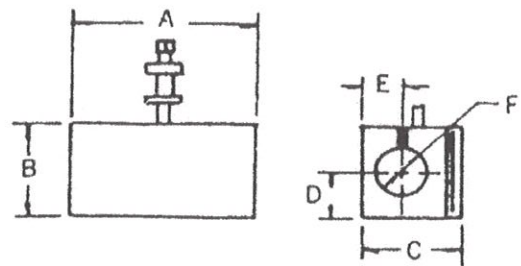
Morse taper toolholders

Used on	Model	A	B	C	D	E	MT
Qct-30	FM303	75	44	38	22	15	2
Qct-50	FM503	85	46	38	23	12	3
Qct-55	FM553	100	60	44	30	20	3
Qct-66	FM663	120	68	58	34	23	4
Qct-140	FM1403	160	80	65	40	25	4
Qct-160	FM1603						
Qct-180	FM1803						
Qct-200	FM2003						



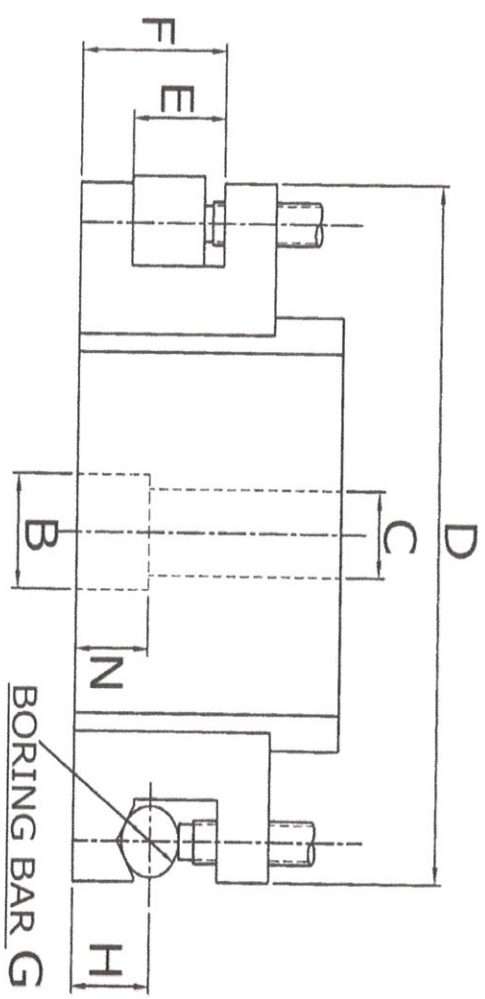
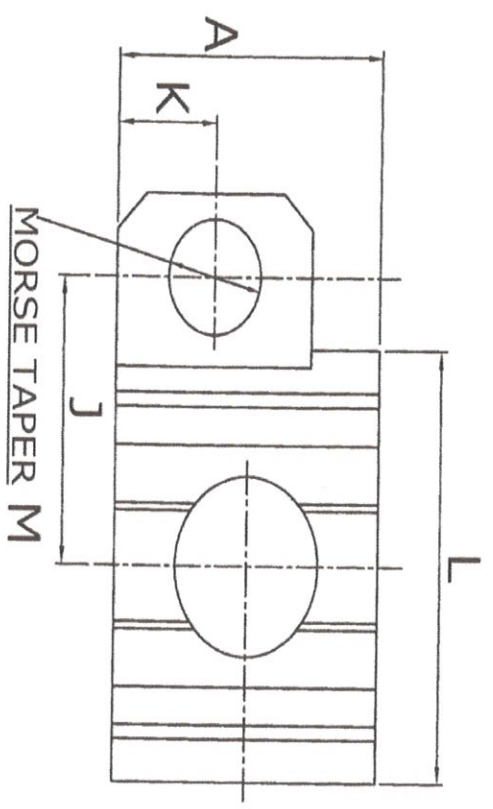
Plain Bore

Used on	Model	A	B	C	D	E	F
Qct-30	FM305	75	44	38	22	19	20
Qct-50	FM505	85	46	38	23	15	20
Qct-55	FM555	100	60	44	30	17	25
Qct-66	FM665	120	68	58	34	19	32
Qct-140	FM1405	140	80	75	40	29	40
Qct-160	FM1605	160	90	87	45	35	50
Qct-180	FM1805						
Qct-200	FM2005						





Quick change toolposts



MODEL	LATHE CAPACITY	A	B	C	D	E	F	G	H	J	K	L	M	N
Qct-30	4 1/2"~5" Centers	66	24	17	118	20	32	13	21	52	22	76	2	24
Qct-50	5"~8" Centers	68	24	17	130	22	34	15	22	62	22	85	2	24
Qct-55	8"~11 1/2" Centers	81	32	21	152	27	42	17	26	65	30	100	3	25
Qct-66	11 1/2"~15" Centers	93	32	24	194	32	50	19	29	80	34	120	4	25
Qct-140	20"~30" Centers	108	40	27	218	38	60	25	32	98	38	140	4	32
Qct-160	25"~40" Centers	130	40	27	260	46	68	32	41	X	X	160	X	32
Qct-180	35"~45" Centers	148	40	30	295	51	77	35	46	X	X	180	X	37
Qct-200	35"~50" Centers	158	50	32	332	55	87	40	52	X	X	200	X	37